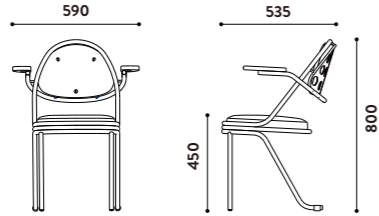


VEIN

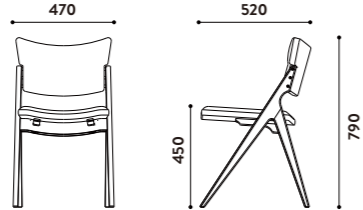
CODE : MM-01
SIZE : W.590×D.535×H.800/SH.450
MATERIAL : Frame:WB Plated Steel & Maple
Seat & Back: Upholstery



UPHOLSTERY
N-SERIES UDS 4,020-
M1-SERIES UDS 4,090-
U-SERIES UDS 4,150-
M2-SERIES UDS 4,270-
R-SERIES UDS 4,470-
(Excl. VAT)

GAZELLE SIDE CHAIR

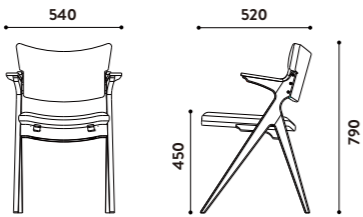
CODE : DJ-01
SIZE : W.470×D.520×H.790/SH.450
MATERIAL : Frame:Red Oak
Seat & Back: Upholstery



UPHOLSTERY
N-SERIES UDS 990-
M1-SERIES UDS 1,030-
U-SERIES UDS 1,100-
M2-SERIES UDS 1,200-
R-SERIES UDS 1,350-
(Excl. VAT)

GAZELLE ARMCHAIR

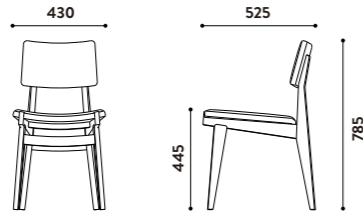
CODE : DJ-02
SIZE : W.540×D.520×H.790/SH.450
MATERIAL : Frame:Red Oak
Seat & Back: Upholstery



N-SERIES UDS 1,100-
M1-SERIES UDS 1,150-
U-SERIES UDS 1,220-
M2-SERIES UDS 1,320-
R-SERIES UDS 1,470-
(Excl. VAT)

MONK SIDE CHAIR

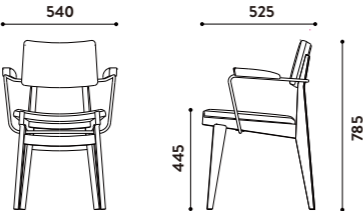
CODE : MG-01
SIZE : W.430×D.525×H.785/SH.445
MATERIAL : Frame:Red Oak
Seat & Back: Upholstery



UPHOLSTERY
N-SERIES UDS 960-
M1-SERIES UDS 1,010-
U-SERIES UDS 1,070-
M2-SERIES UDS 1,160-
R-SERIES UDS 1,320-
(Excl. VAT)

MONK ARMCHAIR

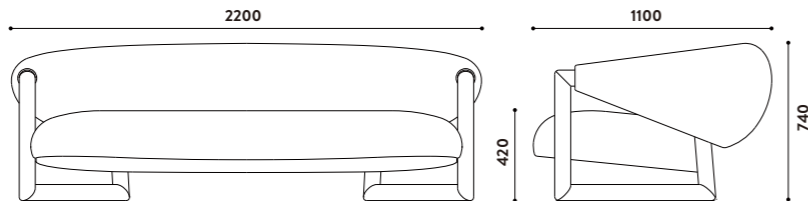
CODE : MG-02
SIZE : W.540×D.525×H.785/SH.445
MATERIAL : Frame:Red Oak & WB Plated Steel
Seat & Back: Upholstery



N-SERIES UDS 1,300-
M1-SERIES UDS 1,340-
U-SERIES UDS 1,390-
M2-SERIES UDS 1,470-
R-SERIES UDS 1,630-
(Excl. VAT)

POMPOUS 3P

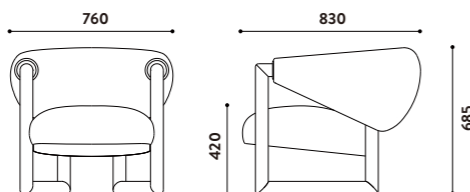
CODE : JR-01
SIZE : W.2200×D.1100×H.740/SH.420
MATERIAL : Frame:Oak
Seat & Back: Upholstery



UPHOLSTERY
N-SERIES UDS 20,350-
M1-SERIES UDS 20,780-
U-SERIES UDS 21,300-
M2-SERIES UDS 22,170-
R-SERIES UDS 23,580-
(Excl. VAT)

POMPOUS 1P SOFA

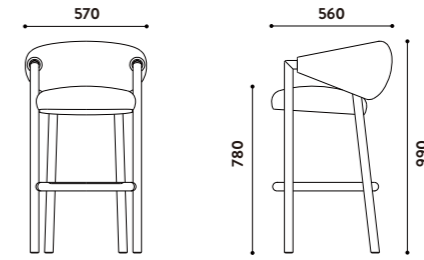
CODE : JR-02
SIZE : W.760×D.830×H.685/SH.420
MATERIAL : Frame:Oak
Seat & Back: Upholstery



N-SERIES UDS 6,850-
M1-SERIES UDS 7,010-
U-SERIES UDS 7,200-
M2-SERIES UDS 7,510-
R-SERIES UDS 8,020-
(Excl. VAT)

POMPOUS COUNTER CHAIR

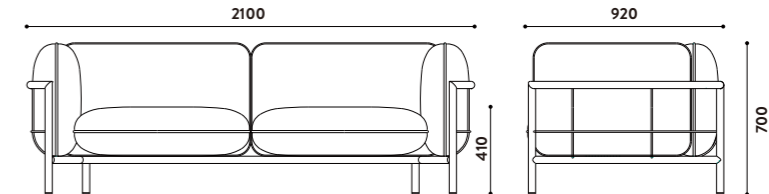
CODE : JR-03
SIZE : W.570×D.560×H.990/SH.780
MATERIAL : Frame:Oak
Seat & Back: Upholstery



UPHOLSTERY
N-SERIES UDS 1,380-
M1-SERIES UDS 1,480-
U-SERIES UDS 1,590-
M2-SERIES UDS 1,770-
R-SERIES UDS 2,070-
(Excl. VAT)

THE TRI 2P SOFA

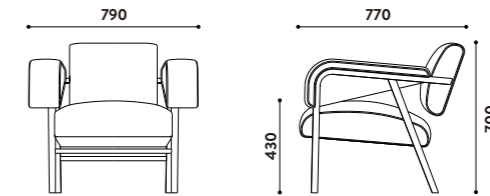
CODE : CG-01
SIZE : W.2100×D.920×H.700/SH.410
MATERIAL : Frame:WB Plated Steel
Seat & Back: Upholstery



UPHOLSTERY
N-SERIES UDS 9,430-
M1-SERIES UDS 10,210-
U-SERIES UDS 11,140-
M2-SERIES UDS 12,700-
R-SERIES UDS 15,240-
(Excl. VAT)

SULLY

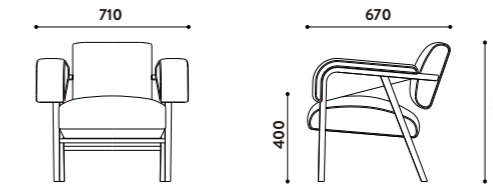
CODE : EG-01
SIZE : W.790×D.770×H.700/SH.430
MATERIAL : Frame:Red Oak & SUS
Seat & Back: Upholstery



UPHOLSTERY
N-SERIES UDS 2,550-
M1-SERIES UDS 2,770-
U-SERIES UDS 3,030-
M2-SERIES UDS 3,460-
R-SERIES UDS 4,160-
(Excl. VAT)

SULLY(S)

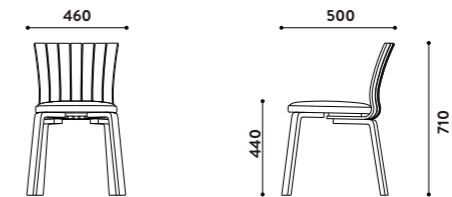
CODE : EG-02
SIZE : W.710×D.670×H.650/SH.400
MATERIAL : Frame:Red Oak & SUS
Seat & Back: Upholstery



N-SERIES UDS 1,800-
M1-SERIES UDS 1,940-
U-SERIES UDS 2,110-
M2-SERIES UDS 2,380-
R-SERIES UDS 2,810-
(Excl. VAT)

ARARE

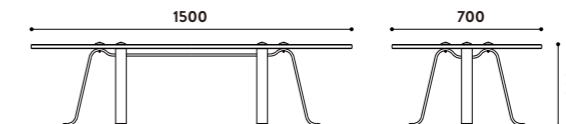
CODE : AA-01
SIZE : W.460×D.500×H.710/SH.440
MATERIAL : Frame:Molded Beech Plywood
Seat : Upholstery / Back: Cotton Tape



UPHOLSTERY
N-SERIES UDS 850-
M1-SERIES UDS 890-
U-SERIES UDS 960-
M2-SERIES UDS 1,040-
R-SERIES UDS 1,210-
(Excl. VAT)

DESSUS 6

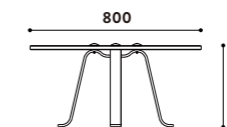
CODE : CP-01
SIZE : W.1500×D.700×H.380
MATERIAL : Top: Glass & Bronze Cast or WB Plated Steel
Base: Bronze Plated Steel or WB Plated steel



UDS 4,640-
(Excl. VAT)

DESSUS 4

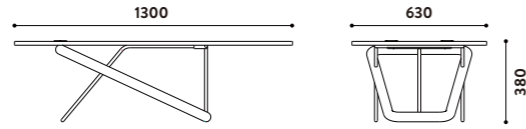
CODE : CP-02
SIZE : W.800×D.800×H.380
MATERIAL : Top: Glass & WB Plated Steel or Bronze Cast
Base: WB Plated Steel or Bronze Plated Steel



UDS 3,940-
(Excl. VAT)

FLOUNDER

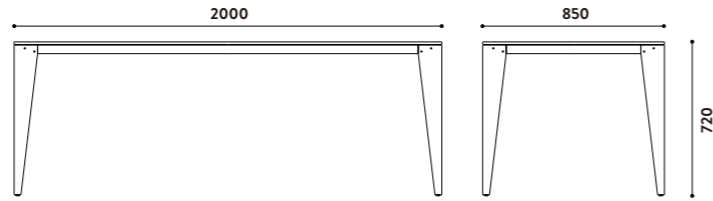
CODE : GG-01
 SIZE : W.1300×D.630×H.380
 MATERIAL : Top: Marble
 Base: Maple & SUS



UDS 4,750-
(Excl. VAT)

EMILE

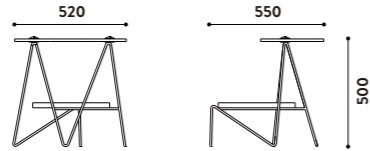
CODE : JP-01
 SIZE : W.2000×D.850×H.720 ※サイズオーダー要相談
 MATERIAL : Top: Fumed Cherry Veneer
 Base: WB Plated Steel or Bronze Plated Steel



UDS 5,590-
(Excl. VAT)

CERRADO

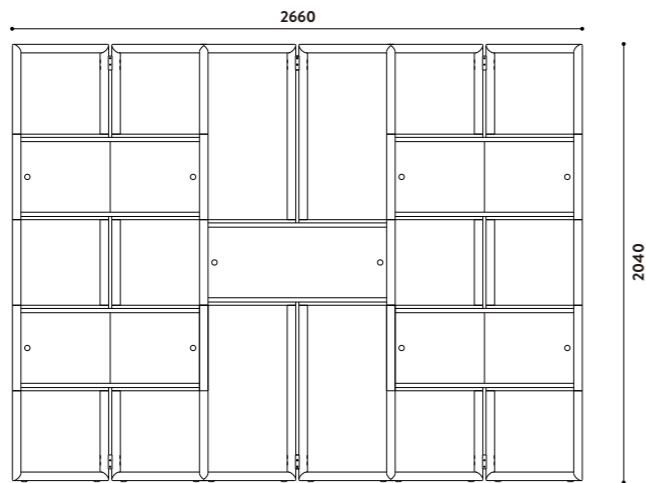
CODE : JC-01
 SIZE : W.520×D.550×H.500
 MATERIAL : Top: Glass, WB Plated Steel or Bronze Cast
 Under: Linoleum Plywood
 Base: WB Plated Steel or Bronze Plated Steel



UDS 2,770-
(Excl. VAT)

BIOMBO

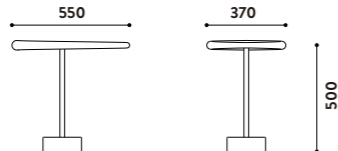
CODE : TN-01
 SIZE : W.2660×D.465×H.2040 ※ユニット数要相談
 MATERIAL : Frame: Maple
 Storage: Baked Finish Steel
 Spacer: Brass



UDS 16,060-
(Excl. VAT)

ROSTRUM

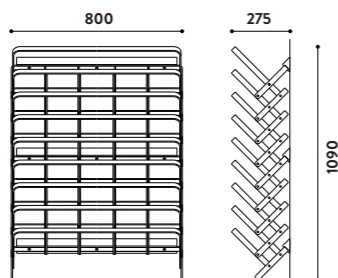
CODE : NI-01
 SIZE : W.550×D.370×H.500
 MATERIAL : Top: WB Plated Steel & Maple
 Base: WB Plated Steel



UDS 2,760-
(Excl. VAT)

LOOPER

CODE : NI-02
 SIZE : W.800×D.275×H.1090
 MATERIAL : Frame: Bronze Plated Steel or WB Plated Steel
 Branchet: Oak



UDS 5,030-
(Excl. VAT)

General Information

1. Export Pricing Policy & Handling Fees

Prices in this list are "International Export Prices" (USD).

The difference from our domestic pricing reflects the specialized international administration, currency fluctuation risks, trade documentation, and professional handling.

Prices are exclusive of any applicable local taxes, VAT, or duties.

2. Trade Terms & Specialized Packaging

(Incoterms: EXW)

All prices are quoted on an EXW (Ex-Works) Japan basis.

To ensure the maximum protection of our furniture, final packaging fees are not included in the product price and will be quoted separately based on your selected type of transportation (Air Freight or Ocean Freight). We offer premium export-grade packaging. Shipping costs, insurance, import duties, and customs clearance fees are the responsibility of the buyer.

3. Lead Time

Standard lead time is approximately 12 weeks from the date of order confirmation and deposit receipt (EXW). Please note that exact lead times may vary depending on the order volume and the timing of the order (subject to seasonal capacity and production queues). A definitive timeline will be provided upon formal quotation.

4. Payment Terms

All payments must be made in USD via international wire transfer (T/T).

A 50% deposit is required to initiate production, with the remaining 50% balance due prior to dispatch from our facility in Japan.

5. Product Warranty & Returns

Due to the nature of international shipping, all sales are final. We conduct rigorous quality inspections before packing. In the unlikely event of transit damage, please notify us within 48 hours of receipt with photographic evidence for insurance claims.

6. Product Characteristics & Disclaimer

Please review the following characteristics and care instructions before purchasing. Due to the nature of our craftsmanship and materials, these conditions are not considered manufacturing defects:

Specifications: Product specifications and designs are subject to change without notice for continuous quality improvement.

Natural Materials (Wood & Veneer): As solid wood and wood veneers are natural materials, the grain, color, and texture will vary from piece to piece. Products may slightly differ from website images, catalogs, or samples. Specific grain patterns cannot be selected or requested.

Dimensions & Variations: Minor dimensional variations and slight height differences may occur depending on production lots and the thickness of chosen fabrics/upholstery.

Finishes: Minor variations in paint or coating finishes may occur even among identical products due to the individual characteristics of the base material.

Copper & Brass: Copper and brass components will naturally oxidize, disfigure, or patina over time. Direct contact with bare hands transfers skin oils, which accelerates oxidation.

Coated/Plated Metal: Strong impacts may cause paint or plating on metal to peel. Rust may spread from areas where the coating has been compromised.

Glass: We use standard glass backed with a shatterproof film. However, please handle with care as severe impacts may cause the glass to shatter.

Natural Marble: Our natural marble comes with a protective glass coating. The durability of this coating depends entirely on usage and care.

Plywood Edges: Visible plywood edges (end grains) may occasionally feature natural mark or minor filler marks due to the structural process.

Linoleum Care: Linoleum is highly sensitive to alkaline substances; do not use strong alkaline detergents. Do not apply oil or linseed oil to the linoleum surface.

Spillages: In the event of spills (including water, coffee, tea, and alcohol), please wipe the surface clean immediately with a dry cloth to prevent staining or damage.

Contact & Inquiries

Email: info@editora.jp

SHOWROOM

Address: 2-1-7 Nihonbashi-kayabacho, Chuo-ku, Tokyo

103-0025, Japan

Business Hours: 10:00 - 18:00 (JST)

by appointment only

EDITORA

<https://editora.jp/en/>

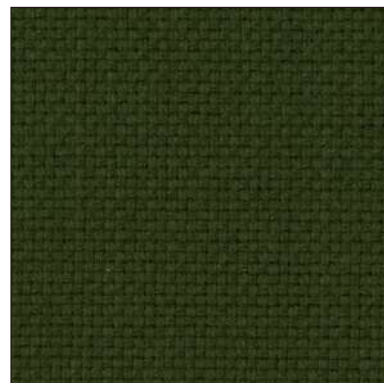
N-SERIES JAPAN MADE 70% Acrylic, 30% Wool



N-1001



N-1002



N-1003



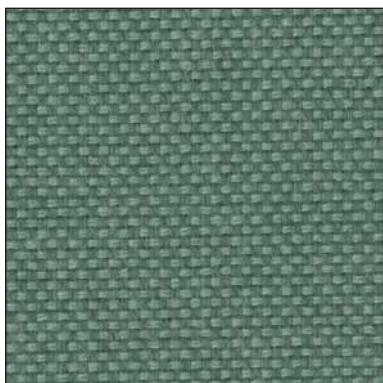
N-1004



N-1005



N-1006



N-1007



N-1008



N-1009



N-1010



N-1011

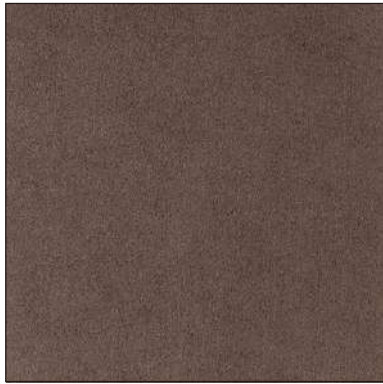


N-1012

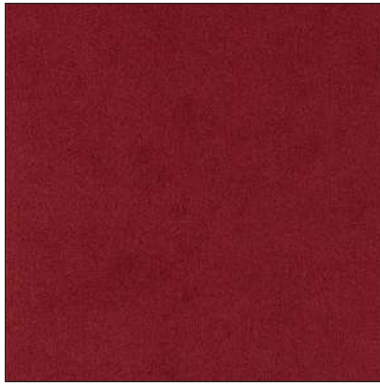
U-SERIES

JAPAN MADE

80% Polyester (approx. 50% Recycled Microfiber, approx. 30% Scrim)
20% Polyurethane



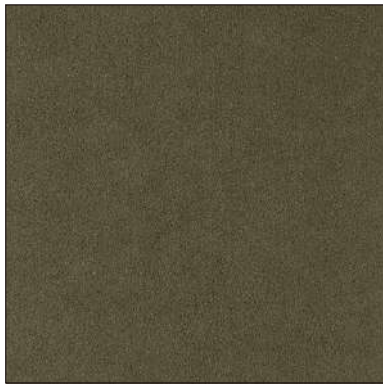
U-2001



U-2002



U-2003



U-2004



U-2005



U-2006



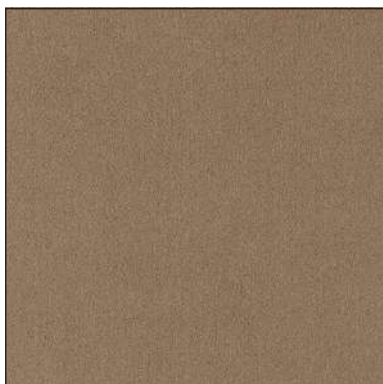
U-2007



U-2008



U-2009



U-2010



U-2011



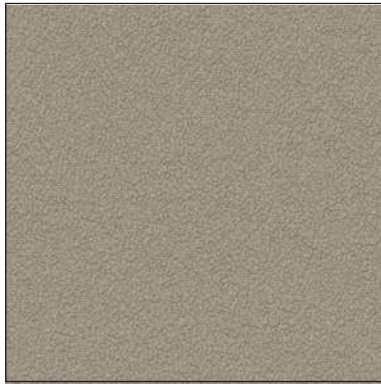
U-2012

M-SERIES

M1-3001 / 3002 / 3003 / 3004 / 3005
M2-3006 / 3007 / 3008 / 3009

100% Polyester

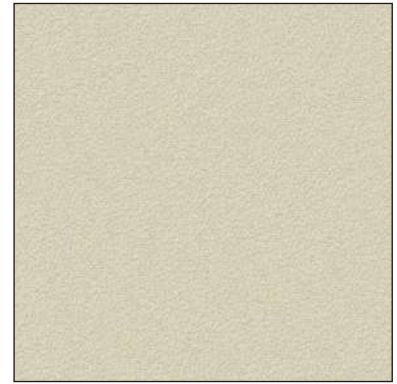
100% Polyester (Recycled)



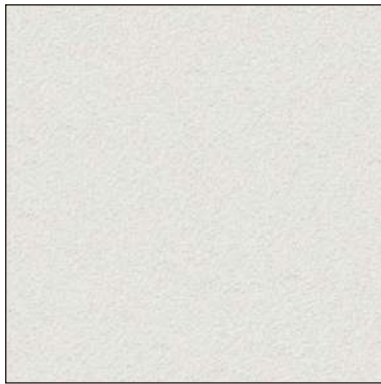
M1-3001



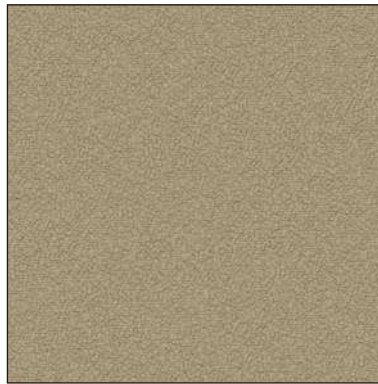
M1-3002



M1-3003



M1-3004



M1-3005



M2-3006



M2-3007



M2-3008



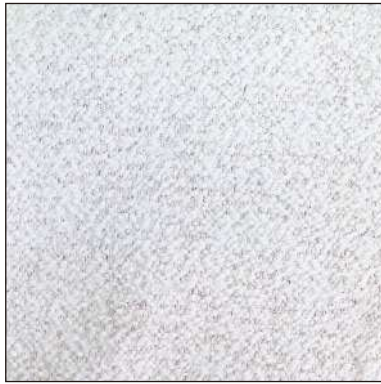
M2-3009

R-SERIES

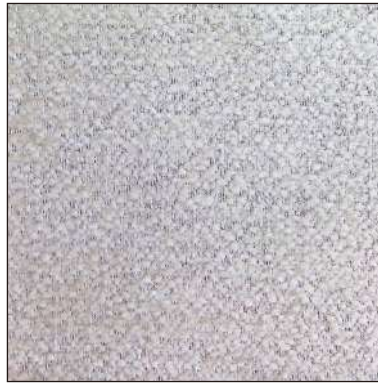
R-4001 / 4002 / 4003
-4004 / 4005 / 4006 / 4007
R-4008 / 4009

49% Polycarbonate, 23% Viscose, 11% Linen, 9% Polyester, 8% Cotton

67% Polycarbonate, 22% Polypropylene, 11% Polyester



R-4001



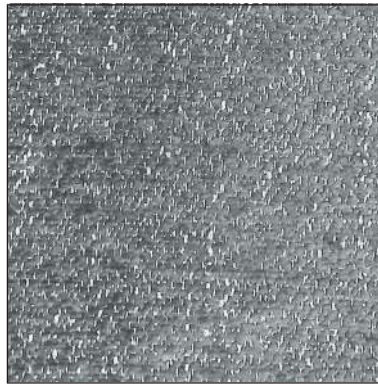
R-4002



R-4003



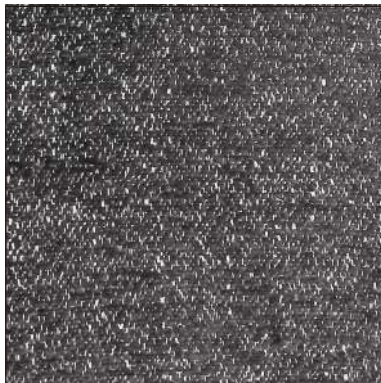
R-4004



R-4005



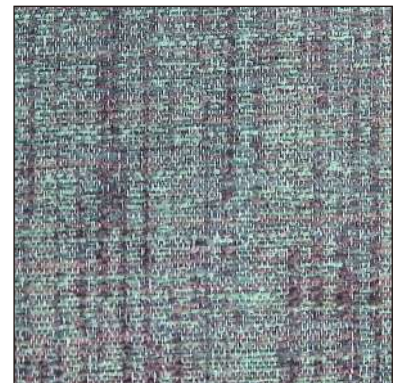
R-4006



R-4007



R-4008



R-4009